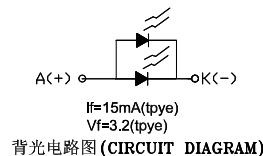


PIN	DESCRIPTION
1	BL_K
2	BL_A
3	GND
4	VDD
5	IDVCC(1.8/2.8V)
6	te
7	/CS
8	/RSTB
9	RS
10	WRB
11	RDB
12	DB7
13	DB6
14	DB5
15	DB4
16	DB3
17	DB2
18	DB1
19	DB0
20	GND

FPC弯折示意图
(展开出货)

NOTES:

1. VIEWING DIRECTION 12 O'CLOCK
2. POLARIZER MODE : TRANSMISSIVE
3. OPERATING TEMP : -20°C~+70°C
4. STORAGE TEMP : -30°C~+80°C
5. DRIVER IC : 9108
6. CONNECTOR : COG+FPC
7. GENERAL TOLERANCE ±0.2



深圳市艾斯迪科技有限公司
LCDT1778BCTC2001

8. 建议客户机壳开窗尺寸比LCD A.A单边大0.4mm

REV	DESCRIPTION	DATE	SCALE:1/1	UNIT:mm	PAGE:1/1	APPROVED	CHECKER	DRAWN
ZC948								FUCHUNYING
								2013.09.12
			MODEL NUMBER:					
			PART NO:	SXT1782V0	EDI			